



## CERTIFICATE OF ANALYSIS

20 Martin Ross Avenue, North York, ON, M3J 2K8, CANADA  
Tel: (416) 665-9696, Fax: (416) 665-4439  
Email: orders.trc@lgcgroup.com Website: www.trc-canada.com

### 1. Identification

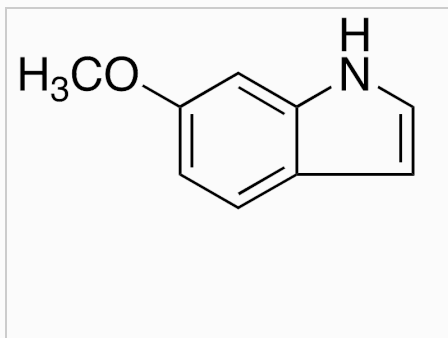
**Catalogue Number:** M262715

**CAS Number:** 3189-13-7

**Product:** 6-Methoxyindole

**Synonym:** 6-Methoxy-1H-indole; 6-(Methyloxy)-1H-indole; NSC 92517;

**Structure:**



**Molecular Formula:**

C<sub>9</sub>H<sub>9</sub>NO

**Molecular weight:**

147.17

**Source of Product:**

N/A

**Solubility:**

Methanol (Slightly)

**Lot Number:** 5-XJZ-190-1

**Purity:** 98%

**Shipping Condition:** This Product Is Stable To Be Shipped At Room Temperature

**Storage Condition:** 4°C

### 2. Warning

**Warning 1:**

**Warning 2:**

**Warning 3:**

### 3. Analytical Information

Tests:	Specifications:	Results:
NMR	Conforms to structure	Conforms
MS	Conforms to Structure	Conforms
Melting Point	Report Results	91 - 93°C
HPLC		99.89%
Elemental Analysis	Conforms	Refer: Additional Information
Appearance		White Solid

#### Additional Information:

TLC Conditions: SiO<sub>2</sub>; Dichloromethane = 100%; Visualized with UV and AMCS; Single Spot, R<sub>f</sub> = 0.60. 1H NMR and MS conform to structure. Elemental Analysis: (Found) %C: 73.13, %H: 6.13, %N: 9.44; (Calculated) %C: 73.45, %H: 6.16, %N: 9.52

Purity is based on the analytical results of the tests performed. NMR and Elemental Analysis (if available) may have an accuracy of ± 2%. Isotopic purity is based on mass distribution observed. The contents of the specifications are subject to change without advance notice, and the specification values displayed here are the most up to date values.

### 4. Signatures

Reviewed By	Reviewed By	C of A Approved By	Test Date	Retest Date
Philip Chan			7/4/2018	7/2/2025